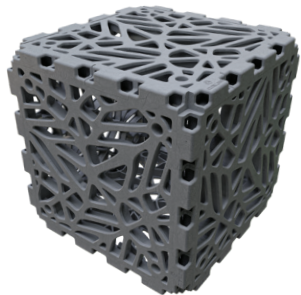
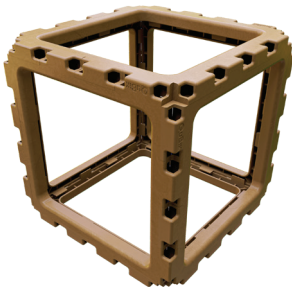


CUBIK.**ONE**



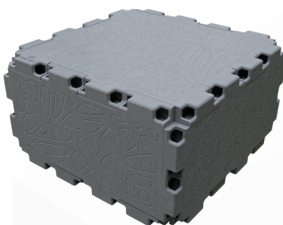
Bion



Void



Zen



Zen/2

For a better understanding,
you can watch a short video at the link



CUBIK.**ONE**

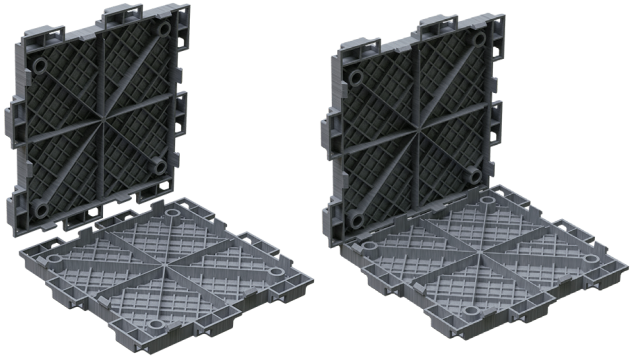
all genius is simple...

Build Your Dream, One Cube at a Time

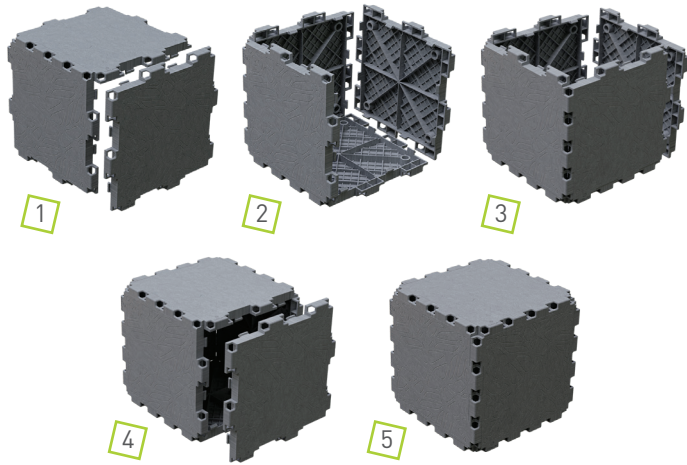
INSTRUCTIONS



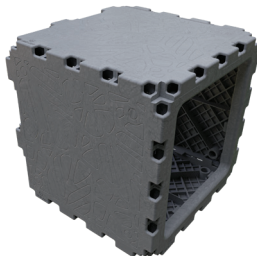
1 Align the edges towards each other until the latches lock into place. A small amount of force should be applied. A characteristic audible "click" will be the result of full locking of the edges.



2 Sequentially align the remaining four faces to the already connected ones by snapping them together. As a result, we get a cubik figure.



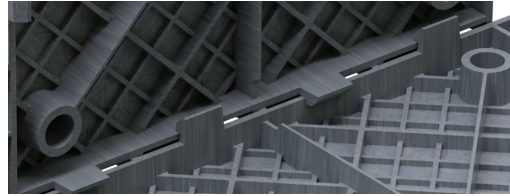
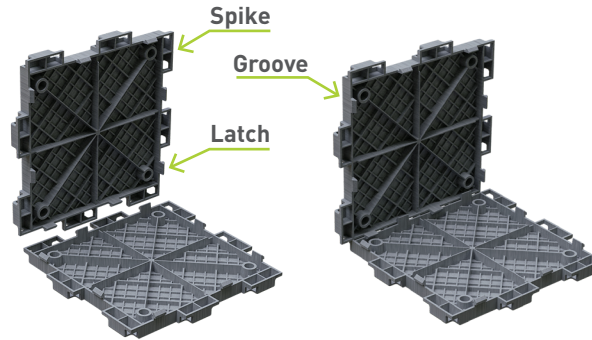
This connection principle is the basis of the entire construction set. Therefore, regardless of the size or shape of the face, the three-dimensional figure is assembled in the same way as described earlier.



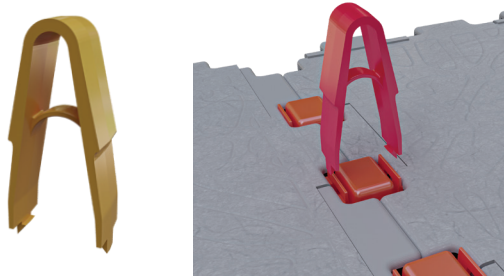
INSTRUCTIONS

To connect the faces into a cubik, you need to:

Take two faces and combine the "spikes" with the "grooves". The position of the faces must be perpendicular to each other.

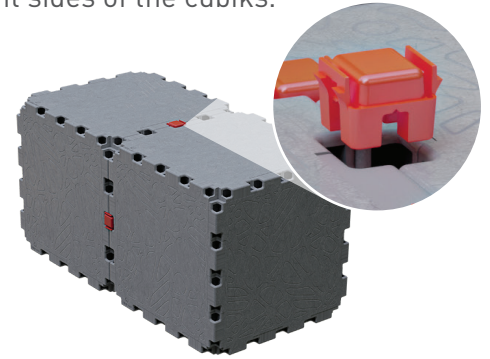


When you want to take the system apart to build something new, you can remove the clips using the included tweezers.

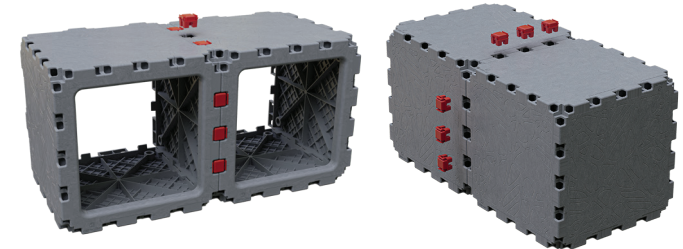


To do this, insert the tweezers firmly into the gap between the faces of the cubiks and the clip on the side of the bent plates, as shown in the picture. Then, slightly rocking the clip, pull it out of the groove, thus disconnecting the cubiks.

To fasten the cubiks to each other, a clip is used, which is inserted into the socket formed when you place two cubiks closely together. To securely connect the cubiks, all you need are two clips to be inserted into the sockets on different sides of the cubiks.



It is better to increase the number of clips to increase the strength of the attachment.



You can then continue to add more cubiks to the system while continuing to apply the clips.

